

ABECEDARIO

A



AVIÓN

B



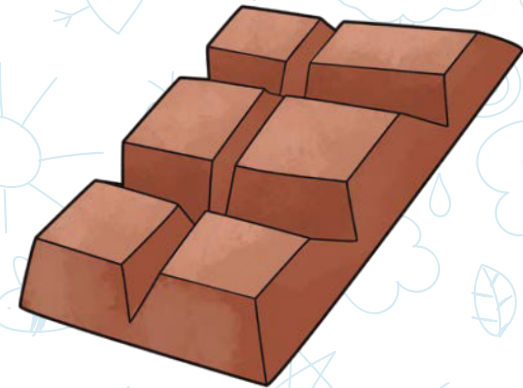
BOCA

C



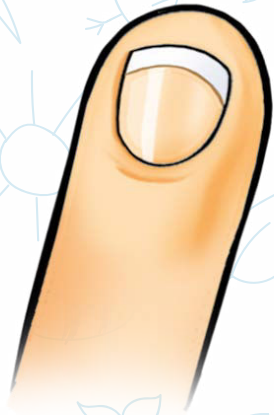
CASA

Ch



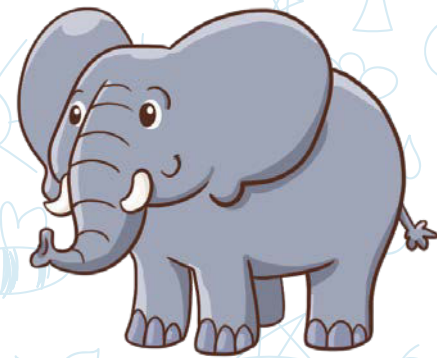
CHOCOLATE

D



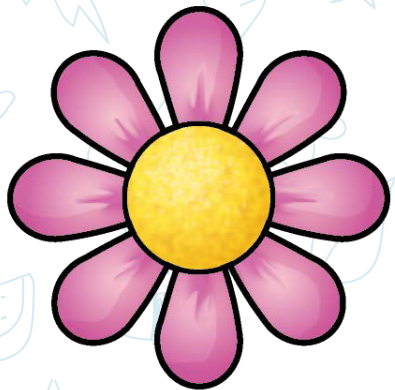
DEDO

E



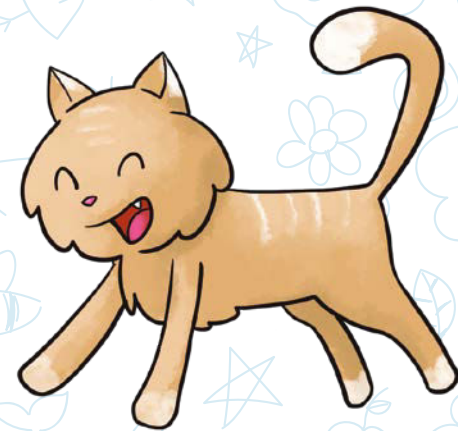
ELEFANTE

F



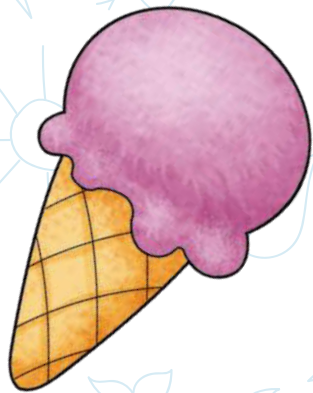
FLOR

G



GATO

H



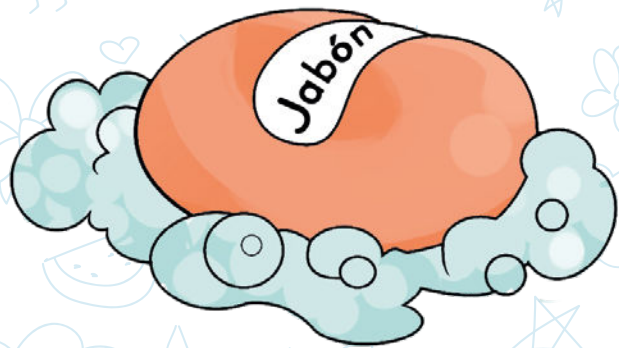
HELADO

I



IGUANA

J



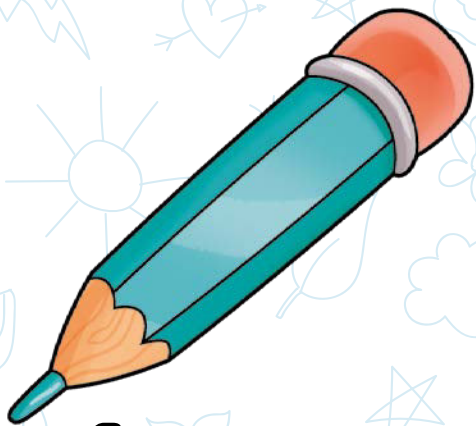
JABÓN

K



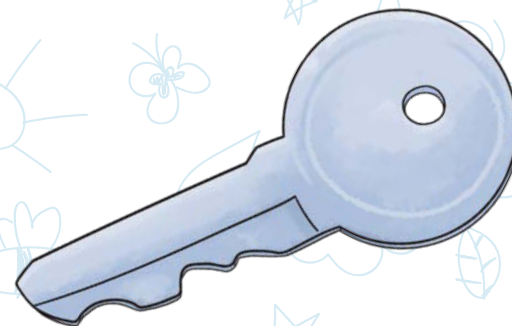
KOALA

L



LÁPIZ

LL



LLAVE

M



MESA

N



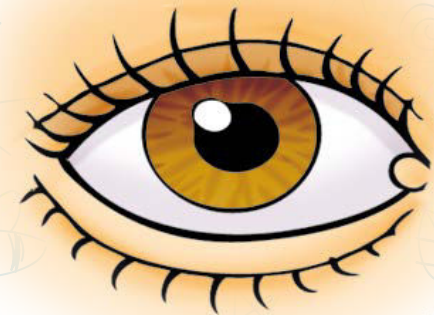
NARANJA

Ñ



ÑANDÚ

O



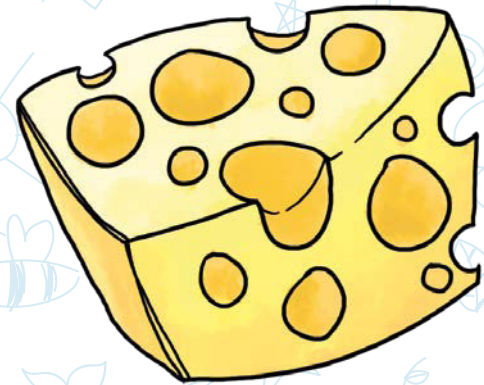
OJO

P



PERRO

Q



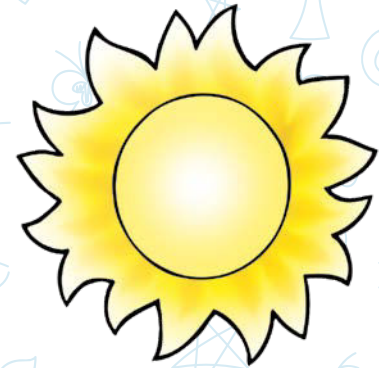
QUESO

R



RATÓN

S



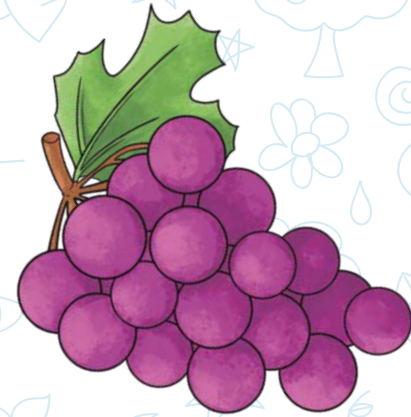
SOL

T



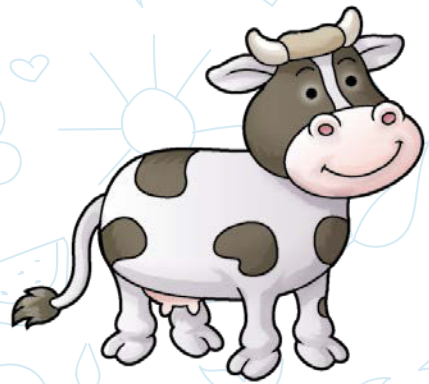
TELEVISOR

U



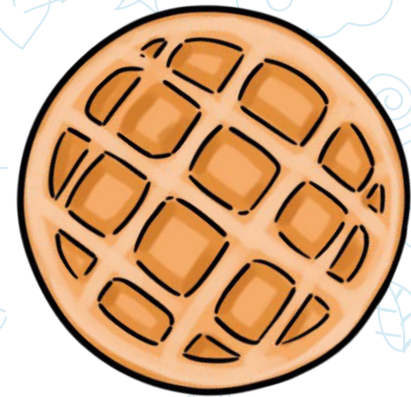
UVA

V



VACA

W



WAFFLE

X



XILÓFONO

Y



YOGURT

Z



ZAPATO

Caligrafix

A



B



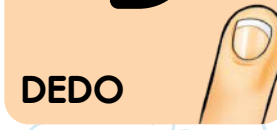
C



Ch



D



E



F



G



H



I



J



K



L



LI



M



N



Ñ



O



P



Q



R



S



T



U



V



W



X



Y



Z





Caligrafix

Comprometidos con la educación

 /caligrafix_chile

 @Caligrafix_editorial

www.caligrafix.cl